

Coolview®

Medical Examination Lamps



- **Comprehensive Range**
- **Intense Cool Light**
- **Spot & Flood Light**
- **Dimming Function**

Coolview® C35

Ideal general practice examination light

Spot and flood light with dimming control

Coolview® C35 is the only product of its type to offer both concentrated spot lighting and diffused flood lighting. It is ideal for examinations over both large and small areas. Dimming to 60% of full intensity is fitted as standard.

Cool light

Both Doctor and Patient are protected from irradiated heat by dichroic filters that remove infra red light to produce intense, cool light, ideal for medical examinations.

Medirail kit (option)

An ideal solution where the patient couch is against the wall. The medirail is mounted parallel to the couch so that the examination light can be used at the head end or the foot end, allowing complete access to the patient.

Choice of arm movements

Users can choose between the elegant FX spring balanced arm or the SX multiflex arm for additional positioning flexibility. Both arms have a reach of 850mm and include built in transformers. The arms have turn restrictors to prevent them being pushed into the wall and locking devices to prevent accidental removal from the fixing brackets.



All models are supplied complete with the relevant mounting brackets and halogen lamps. We have a wide range of mounting brackets. Please contact us if the standard mounting systems do not meet your requirements.



Lamp Head



Rail Mounted



Mobile Unit



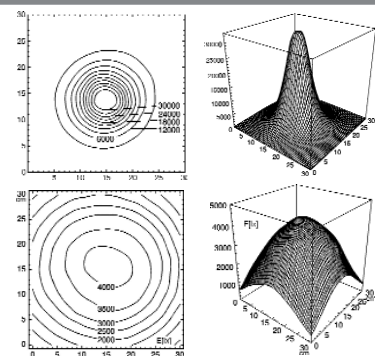
Desk Unit



Wall Mounted

Technical data

- **Safety standards** – EN60598-2-25, EN60601-1
- **Class of protection** – II
- **Lamp type** – 35W 12V 10° Tungsten Halogen Dichroic Lamp (spot light)
– 35W 12V 38° Tungsten Halogen Dichroic Lamp (flood light)
- **Light intensity** – 20,000 Lux @ 0.5m (spot light)
– 5,000 Lux @ 0.5m (flood light)
- **Dimming** – 60/100%
- **Colour temperature** 4,300 °K
- **Power rating** – 40W
- **Weight** – Ceiling models 4.9 Kg, Wall models 1.85 Kg, Mobile models 7.86 Kg



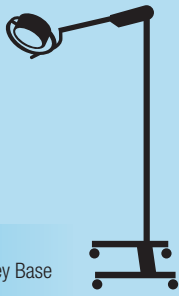
Coolview® Product Codes

Step-by-step guide to product specification

Coolview® lights can be manufactured to meet a variety of specifications and standards. Use this page to generate your own product number which you can use when contacting our Sales Team.

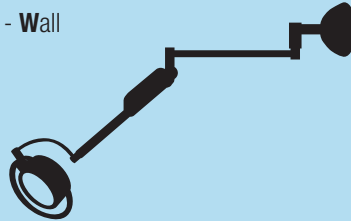
CVXM Examination Light

CVXM - **Mobile**



Example: CVXM-M
Coolview® XM with Mobile Trolley Base

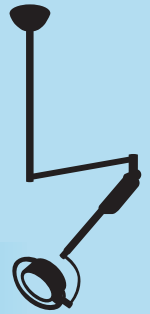
CVXM - **Wall**



Example: CVXM-W
Coolview® XM with Wall Bracket

CVXM - **Ceiling**

CVXM-CA - Ceilings 2900-3100mm
CVXM-CB - Ceilings 2700-2900mm
CVXM-CC - Ceilings 2500-2700mm
CVXM-CD - Ceilings 2300-2500mm

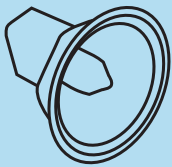


Example: CVXM-CB
Coolview® XM with ceiling fixing
to suit ceilings 2700-2900mm

C50, C35 and MT6008 Examination Lights

Step 1

Select light head



C50 (50 Watt)



C35 (35 Watt)

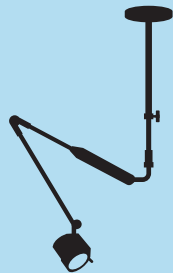


MT6008 (20 Watt)

Example: **C50**
Coolview® 50 Watt light head

Step 2

Select arm type



GX
(for C50
ceiling
mounting
only)



FX
available for
C35 and C50
only



SX
available for
C35 and C50
only

Example: **C50SX**
Coolview® 50 with SX Multiflex Arm

Step 3

Select mounting method



C - Ceiling



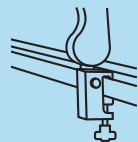
M - Mobile



W - Wall



B - Backplate



R - Rail
Clamp (1m
rail optional)



D - Desk

Example: **C50SXW**
C50 SX with wall mounting bracket

Step 4

Select options



P - Moulded UK Plug, 3m cable



K - Kurly Cord UK Plug
and 1m cable (coiled)



Standard Model - cable wired
through stem (no option suffix)

Example: **C50SXWK**
C50 SX W with kurly cord



Brandon Medical, Holme Well Road, Leeds LS10 4TQ
Tel: +44 (0)113 2777 393 Fax: +44 (0)113 2728 844 Email: enquiries@brandon-medical.com
Tel: +44 (0)845 1243 666 Fax: +44 (0)845 1243 667
www.brandon-medical.com

In line with the Brandon policy of progressive improvement, the right is reserved to alter specifications and/or prices without notice.
Polygiene is a registered trademark of Perstorp AB.

Brandon Medical, Coolview and HD-LED are registered trademarks of Brandon Medical Co Ltd.